

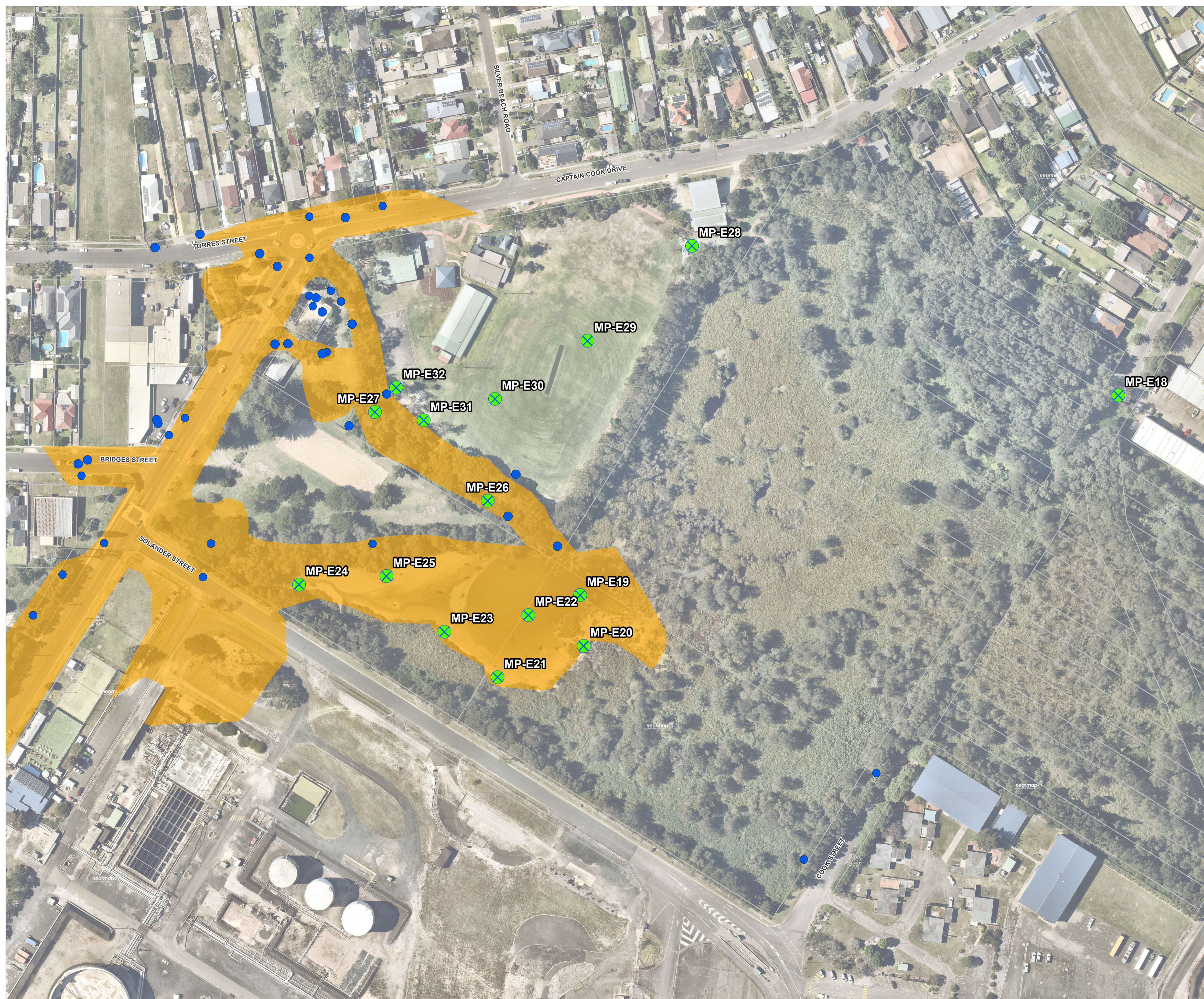


Ampol Kurnell Terminal – Flooding Incident Emergency Response

Figure 2
Estimated extent of initial impact
and sampling locations -
Community update 27 April 2022

Legend

- Previous Sampling Locations
- ⊗ New Sampling Locations
- Estimated Initial Impact Area
- Land Parcel Boundaries



0 0.05 0.1
km

Coordinate system: GDA2020 MGA Zone 56
Scale ratio correct when printed at A1
1:1,000 Date: 27/04/2022

Data sources: DMRU, TRM, Terribin, Geoscience Australia

© WSP Australia Pty Ltd ("WSP"). Copyright in the drawings, information and data recorded ("Information") is the property of WSP. This document and the information are solely for the use of the addressee named in this document and are not to be used, copied or reproduced in whole or in part for any other purpose than that for which they were supplied by WSP. WSP makes no representation, warranty or guarantee, express or implied, in relation to the accuracy, completeness or reliability of the Information. NCS Certified Quality System to ISO 9001. IS APPROVED FOR AND ON BEHALF OF WSP Australia Pty Ltd